



CHELMER MARATHON

16th October 2022
A 2023 Hasler Qualifier
Information Pack





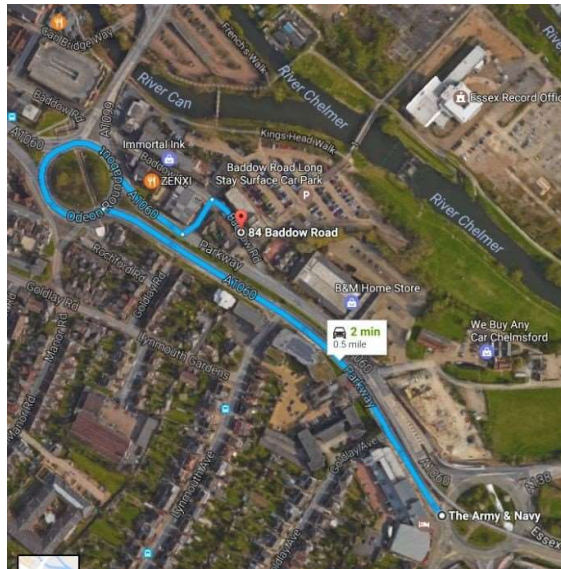
CHELMER MARATHON

Venue: Chelmsford Canoe Club

Where is Chelmsford? Chelmsford is to the East of London just off the M25, some examples of approximate travel times from other clubs are below;

Bishops Stortford	25 Miles	00:40
Barking & Dagenham	35 Miles	00:45
Cambridge	47 Miles	01:00
Tonbridge	50 Miles	00:55
Royal / Richmond	70 Miles	01:25
Leighton Buzzard	72 Miles	01:35
Elmbridge	75 Miles	01:15
Wey	76 Miles	01:15
Viking Bedford	80 Miles	01:45
Norwich	82 Miles	01:54
Reading	90 Miles	01:40
Falcon Oxford	100 Miles	01:40
Nottingham	150 Miles	02:30

PARKING: Parking is available at Baddow Road, CM2 7PJ



With our City Centre location and limited club space we are unable to offer Free Parking. We have limited space for Disabled parking on site, please contact us if you have a specific requirement.

The car park restriction height barrier will be open between 9:30 - 10:30am.

Trailer parking must be pre-arranged with the club, please advise us of any requirement when submitting your entries.



CHELMER MARATHON

Event Timings:

Check In:	9:30 – 11:00
Boat Checks:	From 11:00
Briefing:	11:30
A & B Course Access:	11:45
A & B Starts:	12:00
C & D Course Access:	12:15
C & D Starts:	12:30
Protest Window Finish:	14:15 (approximately)
Prize Giving:	14:45

Starts will be approximately 1-2 min apart

Please do not aim to arrive before 9:30, as there will be local road and path closures related to the Chelmsford Road Marathon.



CHELMER MARATHON

Site and Course Details

Races:

A - 12 Miles, 10 Portages

Singles Divisions 1, 2 & 3, and Doubles Divisions 2 & 3



B - 8 Miles, 8 Portages

Singles Divisions 4, 5 & 6, and Doubles Divisions 4, 5 & 6



C - 3 Miles, 2 Portages **Buoyancy Aids Compulsory for all Competitors on this Course.**

Singles Divisions 7, 8, 9 & 10 and Doubles Divisions 7, 8 & 9



D - 2km, 0 Portages **Buoyancy Aids Compulsory for all Competitors on this Course.**

Geoff Sanders A, B & C K1



Course Diagrams Key

All courses are out and return

Portages in Blue and Turns in Yellow, details of the portages are on the next page.

All distances are approximate



CHELMER MARATHON

The Club Site:

- 1) Check In Desks
- 2) Race Control (Team Leaders & Officials Only)
- 3) Results (outside)
- 4) Female Changing & Toilets
- 5) Male Changing & Toilets
- 6) Food & Drink (First Aid Point)
- 7) Barbecue



Fire Safety:

If the fire alarm sounds, please exit the club house via the nearest exit and club grounds and head to the muster point in front of Under the high bridge. No fire alarm tests or drills are planned.

Toilets:

We have 4 toilets on site, 2 Men's on the left hand side of the Kitchen Area and 2 Ladies on the right hand side of the Kitchen.

Disabled Facilities:

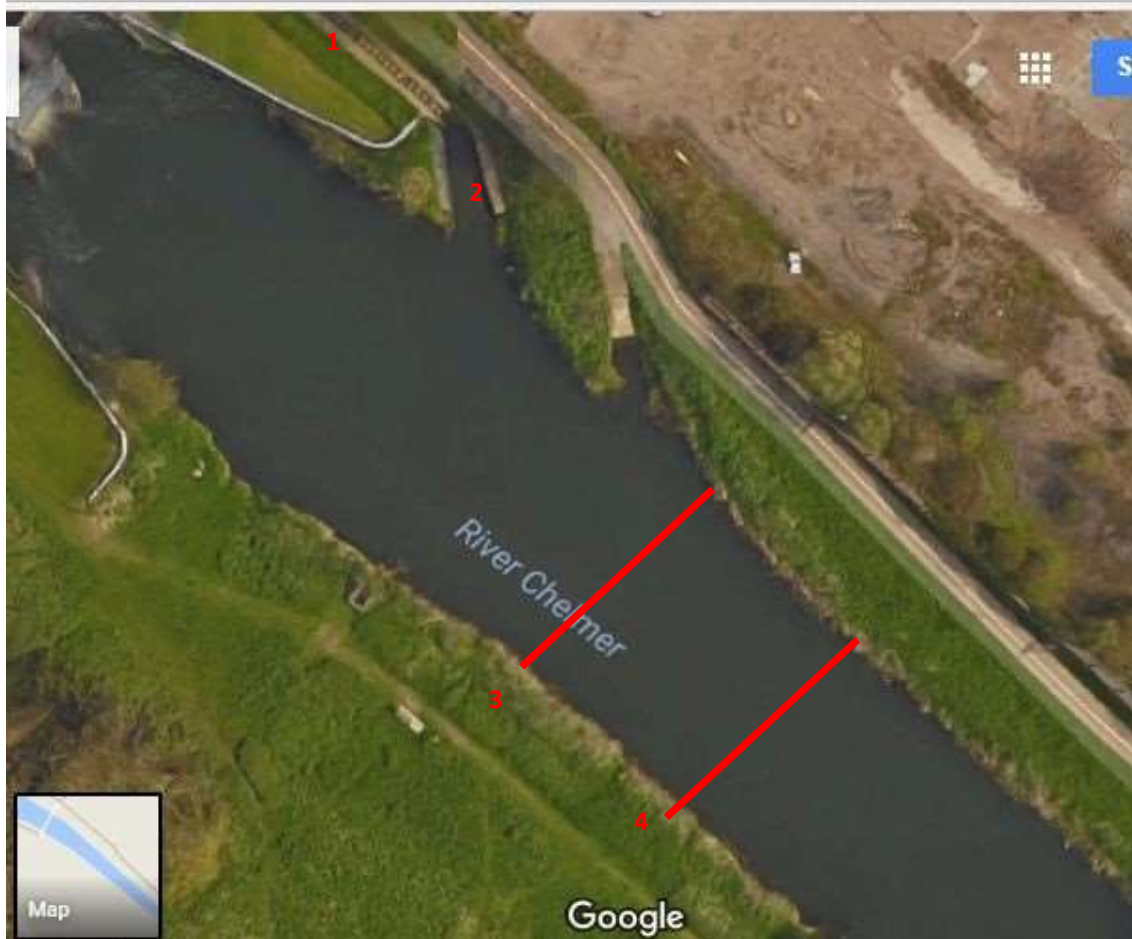
We have separate disabled changing and toilet facilities, please contact the race organiser if you require access to this area.



CHELMER MARATHON

Launching Area:

- 1) Boat Control
- 2) Launching Point
- 3) Pre-Start
- 4) Start





CHELMER MARATHON

The Course

The course is on the canalised river Chelmer, the lead engineer on the canal also worked on the Kennet & Avon, making the style of locks very similar to those seen on the Devizes to Westminster Portaging side is on the way out and should be reversed for the return.

		Turn for:	Portage For:
	Start		
	Barnes Lock Portage left and right	Geoff Sanders	1,2,3,4,5,6,7,8,9
	Sandford Lock Portage Left only, Caution: Road Crossing at this lock	7,8,9	1,2,3,4,5,6
	Cuton Lock Portage left		1,2,3,4,5,6
	Stonhams Lock Portage Left & Right Caution: Animal Burrows around get in points.		1,2,3,4,5,6
	Little Baddow Lock Portage Left & Right	4,5,6	1,2,3
	Paper Mill Lock	1,2,3	



CHELMER MARATHON

Entries, Rules and Fees

Fees:	Senior:	£10.00 per seat
	Junior:	£8.00 per seat
	Geoff Sanders:	£5.00 per seat
	Late Entries:	£5.00 per seat extra

The above fees include British Canoeing race Levies

Please make cheques payable to: Chelmsford Canoe Club.

Entries: To be received by midnight on Thursday **13th October 2022** using the provided entry spreadsheet.

Payment for entries will only be accepted on the day, cash, card or cheque. Please do not post cash or cheques.

Entries should be accompanied with Proof of membership of British Canoeing, any not provided in advance will be checked on the day.

Please enter your team entries to:

<https://entries.gbcanoemarathon.co.uk/entries>

Rules: BC Marathon Rules apply as per the racing year book, plus amendments arising from the Marathon Racing ACM.

Canoe Marathon is a non-contact sport, any reports will be investigated and penalties including time penalties and disqualification. Serious incidents will be reported to British Canoeing in line with incident reporting protocols.

Approved life jackets or buoyancy aids must be worn by all paddlers ranked or racing in Divisions 7, 8, 9 and all Geoff Sanders paddlers and for paddlers in Divisions 6 and above where directed to do so by their team leaders. In certain circumstances buoyancy aids may be made compulsory for all competitors if conditions dictate.

Paddlers ranked D7 & below and those identified by their team leader as requiring their use will be checked for buoyancy at boat inspection prior to being allowed access to the water.

All boats must carry sufficient buoyancy to remain afloat and support their crew in the event of capsize. **In all cases there should be visible additional Buoyancy on Inspection.**

All boats will be subject to a boat check prior to access to the water being granted, any boats not being or meeting additional buoyancy standards will not be allowed access to the water.

Acceptable buoyancy can include;

- 1) Visible air bags



CHELMER MARATHON

- 2) Bulkheads
- 3) Appropriate foam buoyancy

Due to area behind the start / finish area being limited, access to the course will be strictly controlled,

Any protests must be submitted by Team Leader Only to race control within 30 Minutes of completion of the final finish

Assistance:

Paddlers requiring assistance at portages must declare this in advance with their entries, paddlers not declaring this may receive a time penalty or disqualification.

This only relates to assistance in completing the portage and not assistance given to those in difficulty or distress.



CHELMER MARATHON

Important Notices

- Pre-Event Communications:** Official sources of Information on the event will be the Race Organiser (Owen Shephard-Wyatt) by email (chelmsfordraceentries@gmail.com) Chelmsford Canoe Club website, Chelmsford Canoe Club Facebook group & BC Marathon Racing Committee medias.
- During Event Comms:** Communication during event will be via the event team
- 1) All event officials will be identifiable via printed credentials
 - 2) Team Leaders will have submitted contact details ahead of the event, and this will be used for emergency contact during the event by the Race Organiser.
- Chelmsford Marathon:** This is also taking place on the same date as our event, please note there may be local road closures in place when you plan your route.
- The event will be clear of our club site before our check in opens.
- Bank Safety:** The banks and the tow paths around the river may be slippery, uneven or unstable – and much of the river is in a rural and isolated setting, please exercise caution around these areas if spectating.
- Photos & Social Media:** Please can you tag any photos on Instagram or Twitter with the hashtag #CLMHasler22
- Trailer Parking:** If you intend to bring a trailer, please contact the Race Organiser for details.
- Tall Vehicles Parking:** Access through the height restriction is tightly controlled at the request of the council, this will be open between 9:30 and 10:00 before the race and 15:00 and 15:30 after the event.
- Arrival or departure outside of these windows must be arranged via the Race Organisers.
- Construction Works:** The development of the Wharf Road peninsula is well under way, this area is an active construction area and people should not enter this area.
- Data:** As part of the entry process we will be collecting name, club, BC Number, Age Group (Senior, Masters, Junior and Geoff Sanders)
- Proof of BC Membership may be required on request.
- Results information will be shared with BC via the Regional Hasler Advisor. Results (excluding BC numbers) will be retained for Historic Records.
- Team leaders contact information will be collected on the day for



CHELMER MARATHON

administrative and emergency purposes – this will be destroyed following completion of the event.

All Data not required for records will be deleted once the race administration is complete and finalised

Sustainability & Environment:

Disposable drink systems, energy gel sachets and other racing rubbish should be disposed of appropriately, any reports of littering by competitors may lead to time penalties and disqualification

Boat Clean Down:

We kindly request that all competitors clean down their boats to remove organic material to help prevent the spread of invasive species.

Covid 19:

This event will operate under current government Covid Guidelines at the time of the race and those guidelines published by British Canoeing. Obviously, this means things could change at the last minute. Any updates or changes will be provided to all team leaders to pass onto all racers/supporters.

Everybody is required to comply with the procedures and policies put in place.

PLEASE DO NOT ATTEND if you, your family or any contacts have symptoms of Covid 19 or if you are isolating.

Information on symptoms and the use of Rapid Flow Tests can be found on the NHS and PHE websites.

Lastly only team leaders are allowed at race control, for entries, queries and any other business.