



CHELMER MARATHON

13th October 2024

A 2025 Hasler Qualifier

Information Pack





CHELMER MARATHON

Venue: Chelmsford Canoe Club

Where is Chelmsford? Chelmsford is to the East of London just off the M25, some examples of approximate travel times from other clubs are below;

Bishops Stortford	25 Miles	00:40
Barking & Dagenham	35 Miles	00:45
Cambridge	47 Miles	01:00
Tonbridge	50 Miles	00:55
Royal / Richmond	70 Miles	01:25
Leighton Buzzard	72 Miles	01:35
Elmbridge	75 Miles	01:15
Wey	76 Miles	01:15
Viking Bedford	80 Miles	01:45
Norwich	82 Miles	01:54
Reading	90 Miles	01:40
Falcon Oxford	100 Miles	01:40
Nottingham	150 Miles	02:30

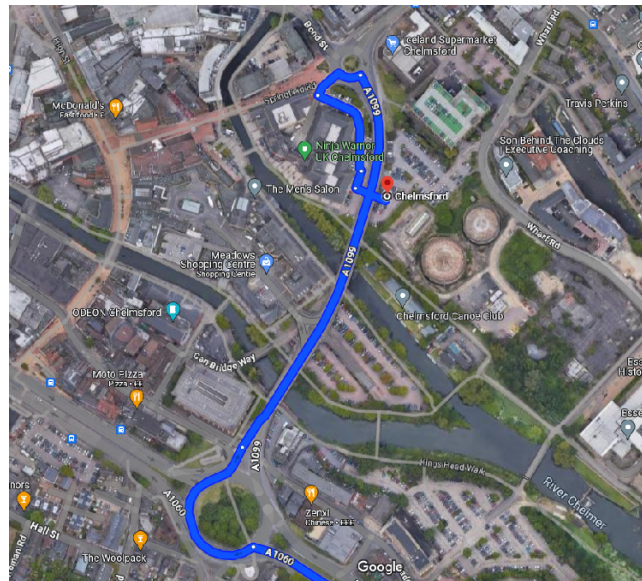
PARKING: Parking is available in two locations depending on vehicle height

Vehicles over 2m Tall - Baddow Road Long Stay Surface carpark, CM2 7PJ (Please note there is building work in this carpark)

Vehicles under 2m Tall (Please remember roof rack and boats!) - Meadows Retail (Surface Car park)

<https://maps.app.goo.gl/UJUGduKoFEv1N9waA>

See Map below as Meadows Retail Carpark



With our City Centre location and limited club space we are unable to offer Free Parking.

We have limited space for Accessible Parking on site, please contact us if you have a specific requirement.

Trailer parking must be pre-arranged with the club, please advise us of any requirement when submitting your entries



CHELMER MARATHON

Event Timings:

Check In:	9:30 – 11:00
Boat Checks:	From 11:00
Briefing:	11:30
A & B Course Access:	11:45
A & B Starts:	12:00
C & D Course Access:	12:15
C & D Starts:	12:30
Protest Window Finish:	14:15 (approximately)
Prize Giving:	14:45

Starts will be approximately 1-2 min apart

Please do not aim to arrive before 9:30, as there will be local road and path closures related to the Chelmsford Road Marathon.

Site and Course Details

Races:

A - 12 Miles, 10 Portages

Singles Divisions 1, 2 & 3, and Doubles Divisions 2 & 3



B - 8 Miles, 8 Portages

Singles Divisions 4, 5 & 6, and Doubles Divisions 4, 5 & 6



C - 3 Miles, 2 Portages **Buoyancy Aids Compulsory for all Competitors on this Course.**

Singles Divisions 7, 8, 9 & 10 and Doubles Divisions 7, 8 & 9



D - 2km, 0 Portages **Buoyancy Aids Compulsory for all Competitors on this Course.**

Geoff Sanders A, B & C K1



Course Diagrams Key

All courses are out and return

Portages in Blue and Turns in Yellow, details of the portages are on the next page.




All distances are approximate



CHELMER MARATHON

The Course

The course is on the canalised river Chelmer, the lead engineer on the canal also worked on the Kennet & Avon, making the style of locks very similar to those seen on the Devizes to Westminster Portaging side is on the way out and should be reversed for the return.

		Turn for:	Portage For:
	Start		
	Barnes Lock Portage left and right	Geoff Sanders	1,2,3,4,5,6,7,8,9
	Sandford Lock Portage Left only, Caution: Road Crossing at this lock	7,8,9	1,2,3,4,5,6
	Cuton Lock Portage left only		1,2,3,4,5,6
	Stonhams Lock Portage Left & Right Caution: Animal Burrows around get in points.		1,2,3,4,5,6
	Little Baddow Lock Portage Left & Right	4,5,6	1,2,3
	Paper Mill Lock	1,2,3	



CHELMER MARATHON

The Club Site:

- 1) Check In Desks
- 2) Race Control (Team Leaders & Officials Only)
- 3) Results (outside)
- 4) Female Changing & Toilets
- 5) Male Changing & Toilets
- 6) Food & Drink (First Aid Point)
- 7) Barbecue



Fire Safety:

If the fire alarm sounds, please exit the club house via the nearest exit and club grounds and head to the muster point in front of Under the high bridge. No fire alarm tests or drills are planned.

Toilets:

We have 4 toilets on site, 2 Men's on the left hand side of the Kitchen Area and 2 Ladies on the right hand side of the Kitchen.

Disabled Facilities:

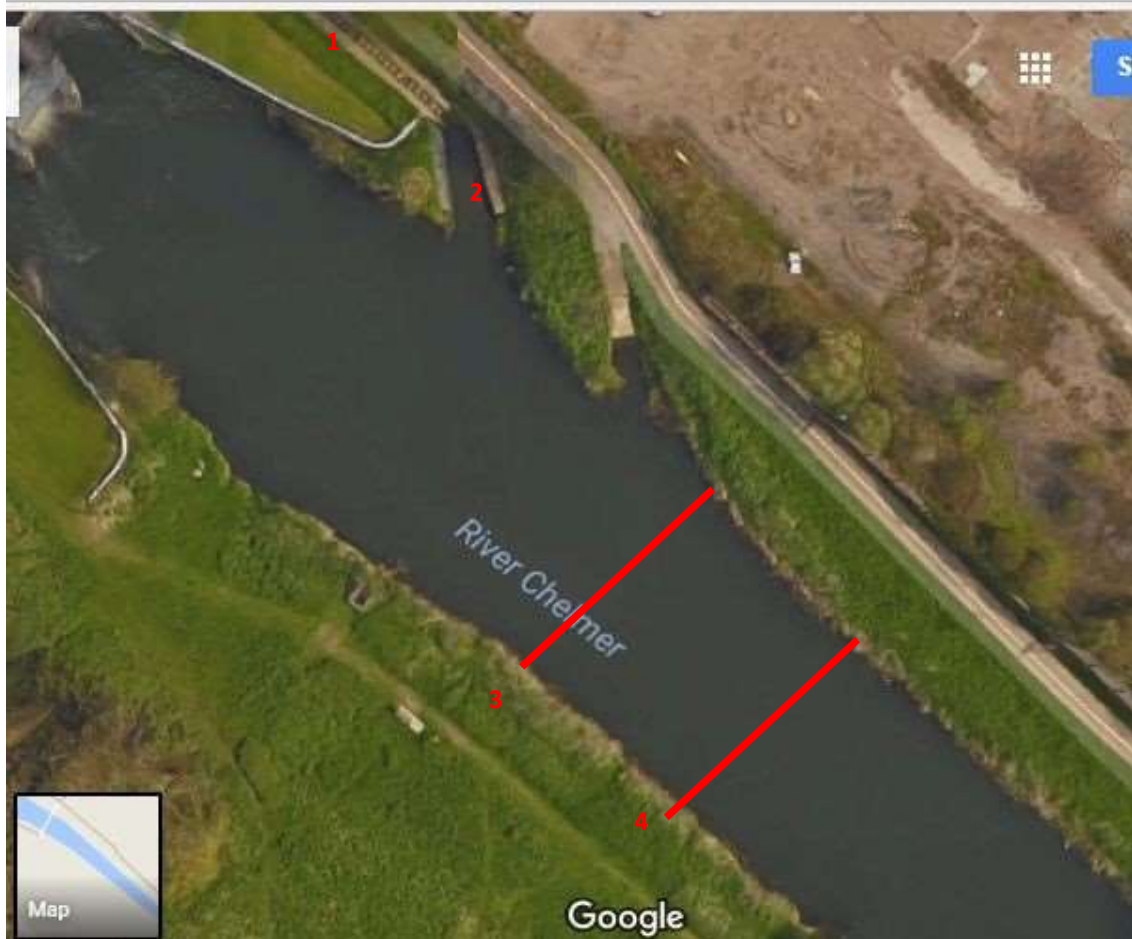
We have separate disabled changing and toilet facilities, please contact the race organiser if you require access to this area.



CHELMER MARATHON

Launching Area:

- 1) Boat Control
- 2) Launching Point
- 3) Pre-Start
- 4) Start



Please note this might change due to on going building work



CHELMER MARATHON

Entries, Rules and Fees

Fees:	Senior:	£12.00 per seat
	Junior:	£10.00 per seat
	Geoff Sanders:	£5.00 per seat
	Late Entries:	£5.00 per seat extra

The above fees include Paddle UK race Levies

To be received by midnight on Thursday 10th October using the online system.

Entries:

Payment for entries can be made via online system or bank transfer. All must be received by midnight on Thursday 10th October 2024, If payment is not received it will be treated as a late entry.

Bank Details

Chelmsford Canoe Club Racing Section

Sort Code: 23-05-80

Account Number: 48029337

Entries should be accompanied with Proof of membership of Paddle UK, any not provided in advance will be checked on the day.

Rules:

Please enter your team entries to:

<https://entries.canoemarathon.org.uk/entries/chelmer-hasler-2024-OCXYmCEY>

PUK Marathon Rules apply as per the racing year book, plus amendments arising from the Marathon Racing ACM.

Canoe Marathon is a non-contact sport, any reports will be investigated and penalties including time penalties and disqualification. Serious incidents will be reported to British Canoeing in line with incident reporting protocols.

Approved life jackets or buoyancy aids must be worn by all paddlers ranked or racing in Divisions 7, 8, 9 and all Geoff Sanders paddlers and for paddlers in Divisions 6 and above where directed to do so by their team leaders. In certain circumstances buoyancy aids may be made compulsory for all competitors if conditions dictate.

Paddlers ranked D7 & below and those identified by their team leader as requiring their use will be checked for buoyancy at boat inspection prior to being allowed access to the water.

All boats must carry sufficient buoyancy to remain afloat and support their crew in the event of capsize. **In all cases there should be visible additional Buoyancy on Inspection.**

All boats will be subject to a boat check prior to access to the water being granted, any boats not being or meeting additional buoyancy standards will not be allowed access to the water. Acceptable buoyancy can include;



CHELMER MARATHON

- 1) Visible air bags
- 2) Bulkheads
- 3) Appropriate foam buoyancy

Due to area behind the start / finish area being limited, access to the course will be strictly controlled,

Any protests must be submitted by Team Leader Only to race control within 30 Minutes of completion of the final finish

Assistance:

Paddlers requiring assistance at portages must declare this in advance with their entries, paddlers not declaring this may receive a time penalty or disqualification.

This only relates to assistance in completing the portage and not assistance given to those in difficulty or distress.

Site Access:

Please follow the directions below to avoid building works





CHELMER MARATHON

Important Notices

- Pre-Event Communications:** Official sources of Information on the event will be the Race Organiser (Owen Shephard-Wyatt) by email (chelmsfordraceentries@gmail.com) Chelmsford Canoe Club website, Chelmsford Canoe Club Facebook group & PUK Marathon Racing Committee medias.
- During Event Comms:** Communication during event will be via the event team
- 1) All event officials will be identifiable via printed credentials
 - 2) Team Leaders will have submitted contact details ahead of the event, and this will be used for emergency contact during the event by the Race Organiser.
- Chelmsford Marathon:** This is also taking place on the same date as our event, please note there may be local road closures in place when you plan your route.
- The event will be clear of our club site before our check in opens.
- Bank Safety:** The banks and the tow paths around the river may be slippery, uneven or unstable – and much of the river is in a rural and isolated setting, please exercise caution around these areas if spectating.
- Photos & Social Media:** Please can you tag any photos on Instagram or Twitter with the hashtag #CLMHasler24
- Trailer Parking:** If you intend to bring a trailer, please contact the Race Organiser for details.
- Construction Works:** The development of the Wharf Road peninsula and Baddow Road Carpark is well under way, this area is an active construction area and people should not enter this area.
- Data:** As part of the entry process we will be collecting name, club, PUK Number, Age Group (Senior, Masters, Junior and Geoff Sanders)
- Proof of PUK Membership may be required on request.
- Results information will be shared with PUK via the Regional Hasler Advisor. Results (excluding PUK numbers) will be retained for Historic Records.
- Team leaders contact information will be collected on the day for administrative and emergency purposes – this will be destroyed following completion of the event.
- All Data not required for records will be deleted once the race administration is complete and finalised



CHELMER MARATHON

Sustainability &
Environment:

Disposable drink systems, energy gel sachets and other racing rubbish should be disposed of appropriately, any reports of littering by competitors may lead to time penalties and disqualification

Boat Clean Down:

We kindly request that all competitors clean down their boats to remove organic material to help prevent the spread of invasive species.

Lastly only team leaders and late entries are allowed at race control, for entries, queries and any other business.